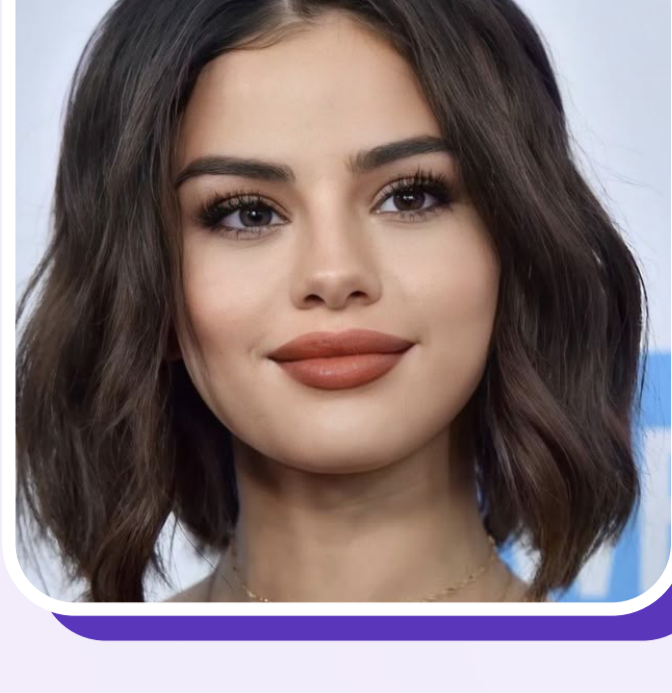


LUPUS

THE SILENT CONDITION OFTEN MISSED



Half of people with lupus nephritis did not know that by definition, they also have lupus.

~ Selena Gomez

What is Lupus?

Lupus is an autoimmune condition where your body's defense system mistakenly attacks healthy tissues instead of protecting them.

It can affect:



Skin



Joints



Kidneys



Other vital organs

Because it can impact different parts of the body, lupus often looks different for everyone.

Early signs to watch for

Are you experiencing:



Constant tiredness or fatigue



Joint pain or swelling



Skin rashes (especially across the face)



Fever without a clear reason



Hair fall or unusual weakness

These symptoms may seem minor at first... but they shouldn't be ignored.

Why Lupus Often Takes Years to Diagnose

Lupus is unpredictable and that's what makes it easy to miss.

It looks like other conditions

- Joint pain may feel like arthritis.
- Fatigue may seem like stress.
- Skin rashes may appear like a common skin issue.

Its symptoms often overlap with everyday health concerns.

Symptoms come and go

You may feel fine for weeks... Then suddenly experience a flare-up. This pattern makes it harder to track.

There's no single test

Diagnosing lupus often requires multiple tests, careful monitoring, and specialist evaluation.

It's often misdiagnosed first

Many people are treated for other conditions before receiving the correct diagnosis.

That delay can affect timely treatment..

WHEN SHOULD YOU PAY ATTENTION

If you notice **2 or more symptoms repeatedly**, especially if they keep returning, don't dismiss them.

Early recognition can make a meaningful difference.

ANYA SAYS

Message "Lupus check" to understand symptoms early.

Your body could be fighting itself... silently.

Knowing the signs helps you act sooner.

